



FOR ILLUSTRATION PURPOSES ONLY

## ASPEN 22.5

Oslo Facade



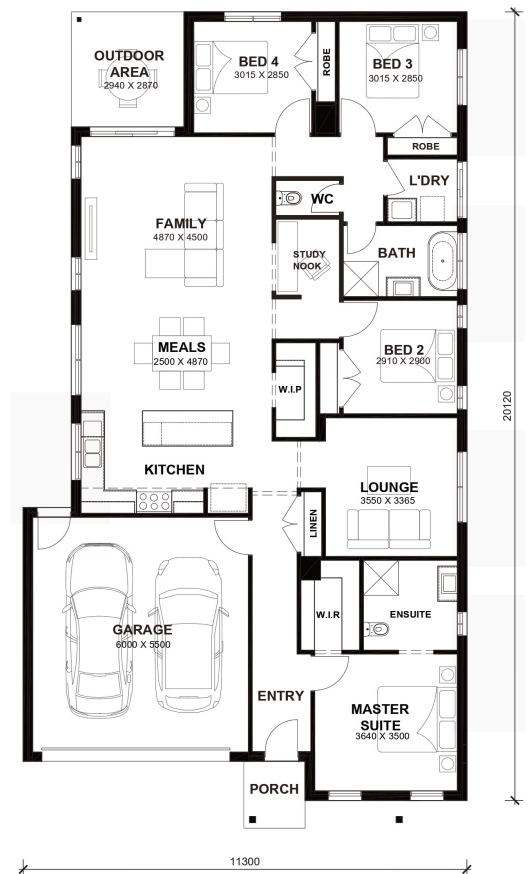
# \$622,700

### Lot 330 Atticus Estate Woodstock (Atticus Estate)

|                   |                   |                     |           |
|-------------------|-------------------|---------------------|-----------|
| <b>Lot Size:</b>  | 350m <sup>2</sup> | <b>House Size:</b>  | 22.51sq   |
| <b>Lot Price:</b> | \$345,000         | <b>House Price:</b> | \$277,700 |

#### PACKAGE INCLUSIONS :

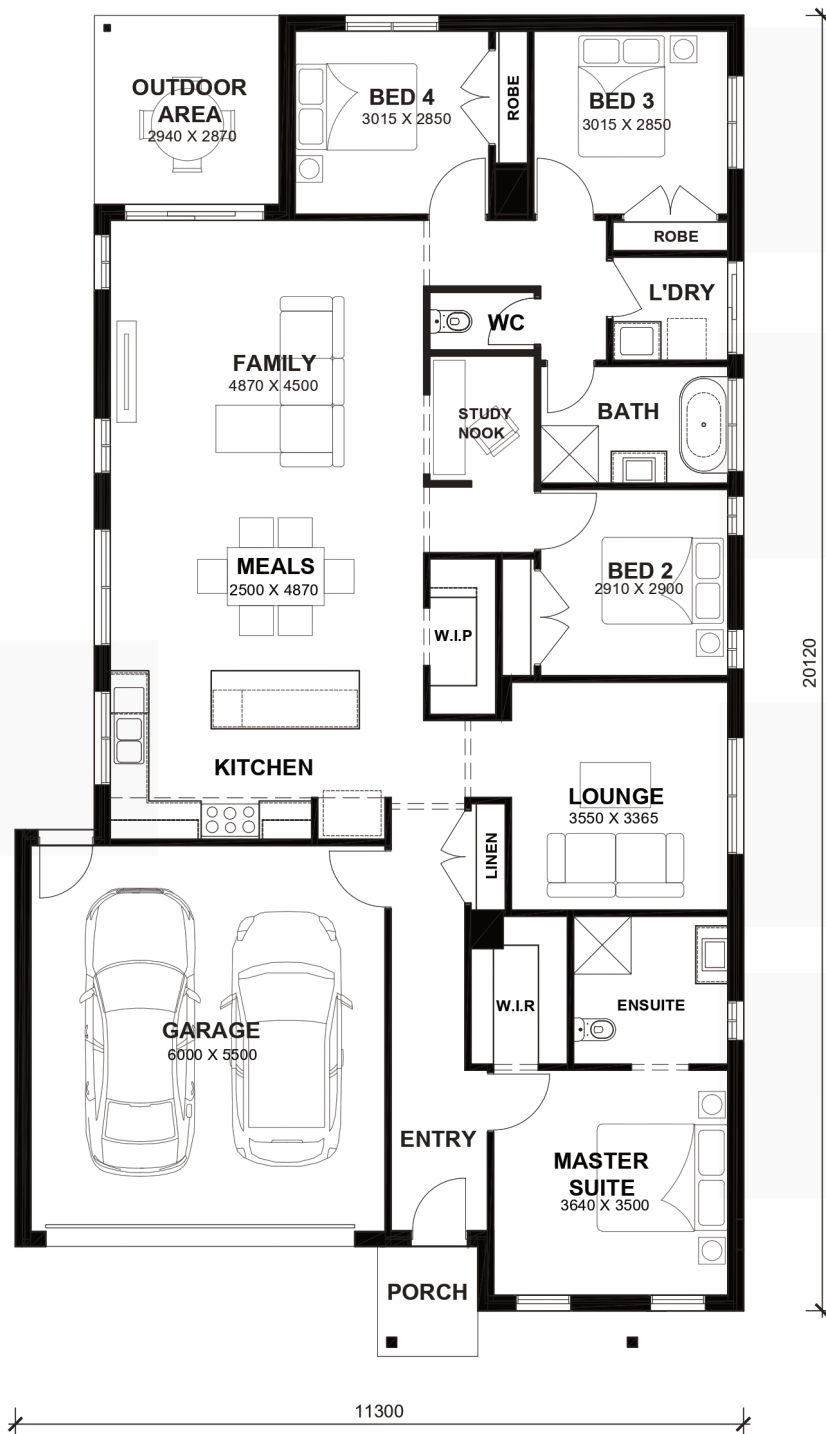
- Tiles/Laminate flooring in living areas
- Led Downlights throughout the House
- 2.2kw Solar System
- Double Glazed Windows (Design Specific).
- TITLED LAND
- 20mm Stone Benchtops Throughout.
- Ducted Heating.
- Flyscreens To All Openable Windows.
- Glazed Porcelain Tiles To All Wet Areas (Including Showerbase).
- Soft Closing Drawers & Doors To All Cabinets.
- 215L Heat Pump Hot water Service.
- Back to Wall freestanding bath tub (size specific).



# Aspen 22.5



LOT WIDTH 12.5m<sup>+</sup> LOT DEPTH 28m<sup>+</sup>



## TOTAL AREAS

|              |                 |              |                 |                 |                      |         |
|--------------|-----------------|--------------|-----------------|-----------------|----------------------|---------|
| FAMILY       | 4870mm x 4500mm | BED 4        | 3015mm x 2850mm | TOTAL           | 209.14m <sup>2</sup> | 22.51sq |
| MEALS        | 2500mm x 4870mm | LOUNGE       | 3550mm x 3365mm |                 |                      |         |
| MASTER SUITE | 3640mm x 3500mm | OUTDOOR AREA | 2940mm x 2870mm | EXTERIOR LENGTH |                      | 20,120  |
| BED 2        | 2910mm x 2900mm | GARAGE       | 6000mm x 5500mm | EXTERIOR WIDTH  |                      | 11,300  |
| BED 3        | 3015mm x 2850mm |              |                 |                 |                      |         |

House size on brochure is based on the Avalon facade. Size may vary dependant on facade. Please refer to working drawings for complete dimensions.